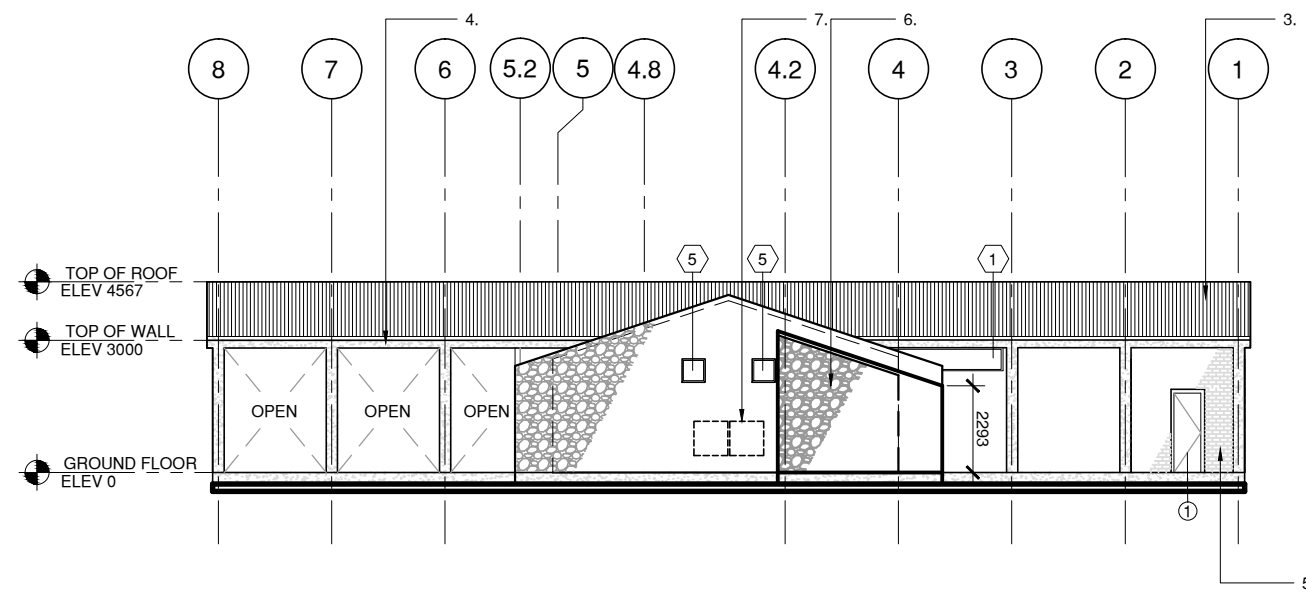


1 FRONT ELEVATION
1:200



2 RIGHT ELEVATION
1:200

WINDOW SCHEDULE	STYLE	SIZE
① SLIDING FULL SPAN WINDOW		3050 mm x 610 mm
② SERVICE WINDOW		1220 mm x 1220 mm
③ SLIDING WINDOW		1220 mm x 610 mm
④ SLIDING WINDOW		2000 mm x 1220 mm
⑤ FIXED SINGLE FRAME		610 mm x 610 mm
⑥ STORE FRONT		2200 mm x 1600 mm
⑦ VENT BLOCK		1750 mm x 610 mm
⑧ TRANSOM		900 mm x 430 mm

DOOR SCHEDULE	SIZE
① SINGLE PANEL FLUSH DOOR	800 mm
② DOUBLE ACTING DOOR	1800 mm
③ BATHROOM SINGLE PANEL FLUSH DOOR	750 mm
④ VAULT DOOR	600 mm
⑤ CLOSET DOOR	700 mm
⑥ DOUBLE ACTING BATHROOM DOOR	800 mm
⑦ ENTRY DOOR	1800 mm
⑧ SERVICE DOOR	1000 mm

MATERIALS LIST
1. SKY LIGHT - KALWALL PANELS
2. HOSPITAL LOGO
3. METAL ROOF
4. CONCRETE SUPERSTRUCTURE
5. BRICK
6. WHITE FIELDSTONE FROM LOCAL QUARRY
7. AIR CONDITIONING UNIT



NOT FOR CONSTRUCTION

... designing a world of hope
 engineering Ministries international
 130 east kiowa st. ste 200 colorado springs, co 80903
 phone: (719) 633-2076 fax: (719) 633-2970 www.emiusa.org



NANA OWUSU BADU REGIONAL HOSPITAL - TRADE, GHANA
MEDICAL CLINIC
FRONT AND RIGHT ELEVATIONS

DATE ISSUED:
OCT 2014
 PROJECT:
5622
 SCALE:
1:200
mm
 SHEET NUMBER
MC:A-4