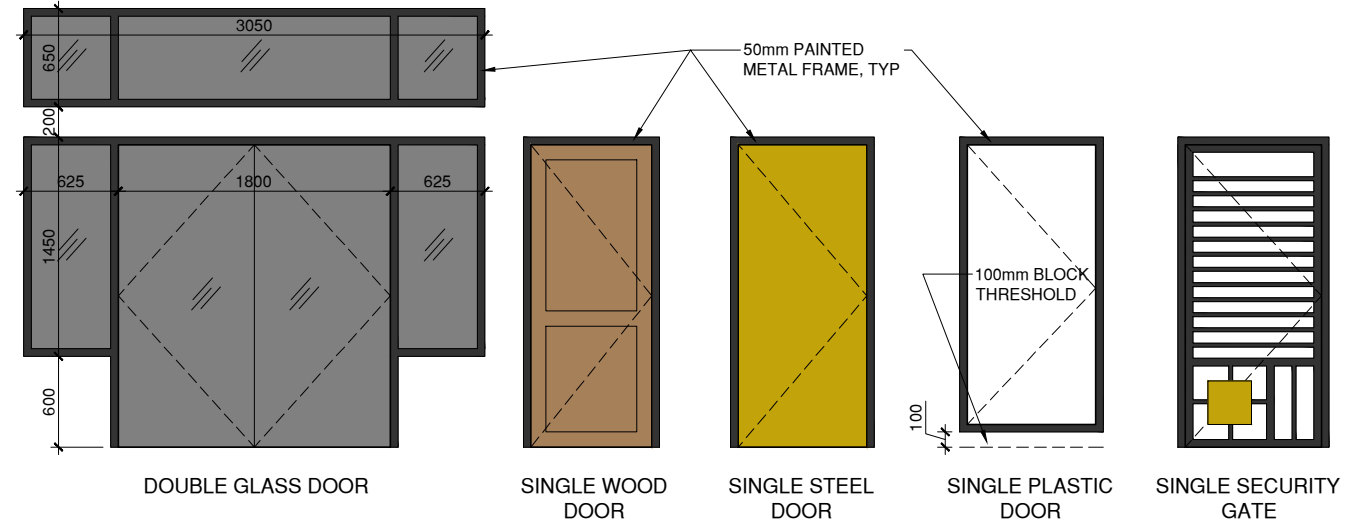
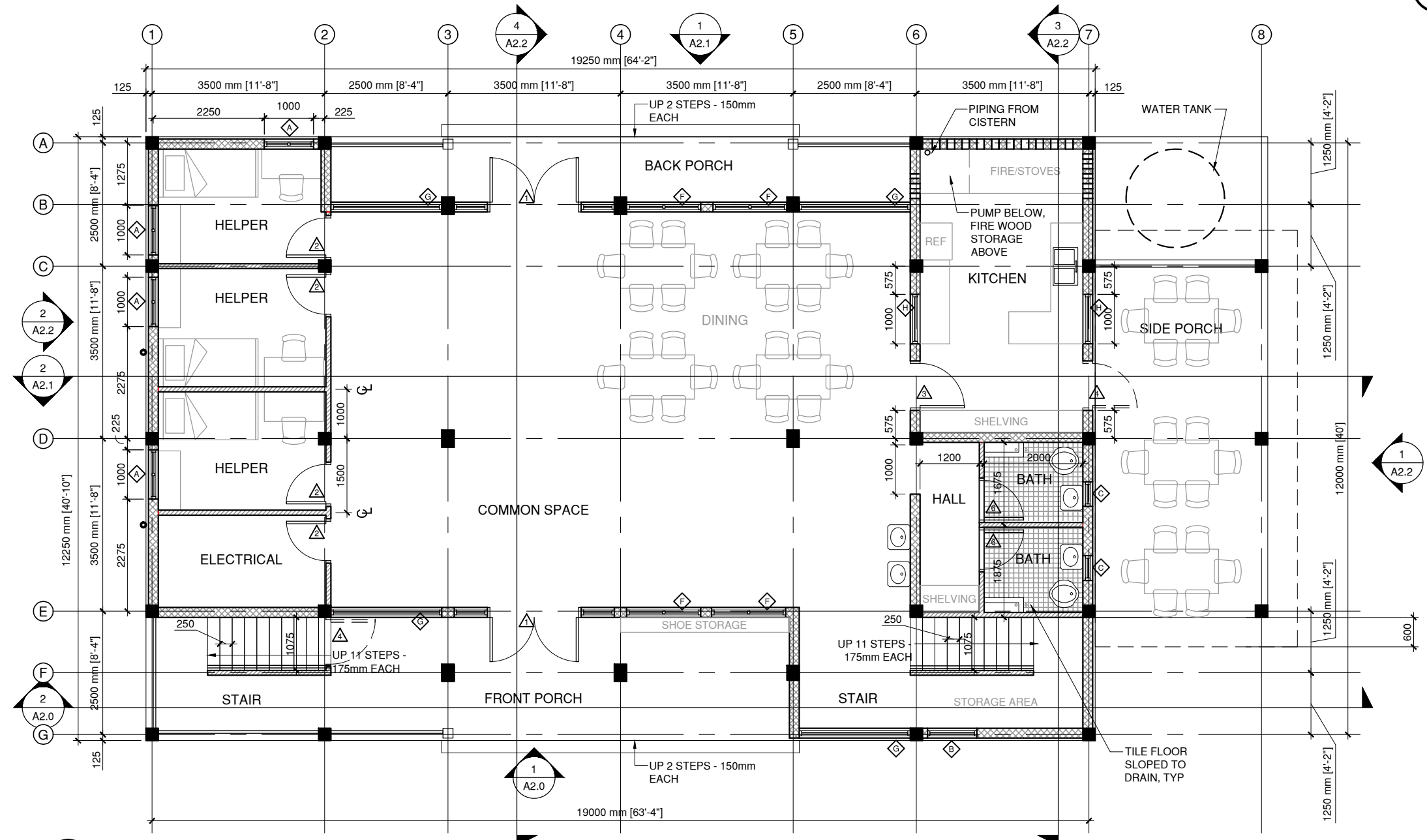


| TAG # | QUANTITY | ROUGH OPENING | DOOR | | THRESHOLD | FRAME SIZE | TYPE |
|-------|----------|------------------------|-----------------------|-----|-----------|----------------------------|------|
| | | | SIZE (WIDTHxHEIGHT) | | | | |
| 1 | 2 | 1900.000 X 2050.000 mm | PAIR 900 mm x 2000 mm | YES | 50 mm | DOUBLE GLASS DOOR | |
| 2 | 6 | 900.000 X 2050.000 mm | 800 mm x 2000 mm | NO | 50 mm | SINGLE WOOD DOOR | |
| 3 | 7 | 1000.000 X 2050.000 mm | 900 mm x 2000 mm | YES | 50 mm | SINGLE STEEL DOOR | |
| 4 | 2 | 1000.000 X 2100.000 mm | 900 mm x 2050 mm | NO | 50 mm | SINGLE STEEL SECURITY GATE | |
| 6 | 9 | 900.000 X 1900.000 mm | 800 mm x 1850 mm | YES | 50 mm | SINGLE PLASTIC DOOR | |
| 7 | 1 | 700.000 X 2050.000 mm | 600 mm x 2000 mm | NO | 50 mm | SINGLE WOOD DOOR | |
| | 27 | | | | | | |

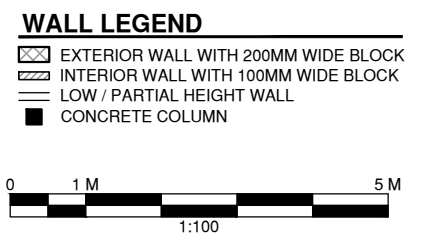
3 DOOR SCHEDULE



2 DOOR TYPES
1:50



1 GROUND FLOOR PLAN
1:100



REMEMBER NHU - 32 BUNK CHILDREN'S HOMES

GROUND FLOOR PLAN

DATE ISSUED:
APRIL 2013

PROJECT:
#5577

SCALE:
1:100
mm

SHEET NUMBER
A1.0

emi ... designing a world of hope
engineering Ministries international
130 east klowa st. ste 200 colorado springs, co 80903
phone: (719) 633-2078 fax: (719) 633-2570 www.emiusa.org